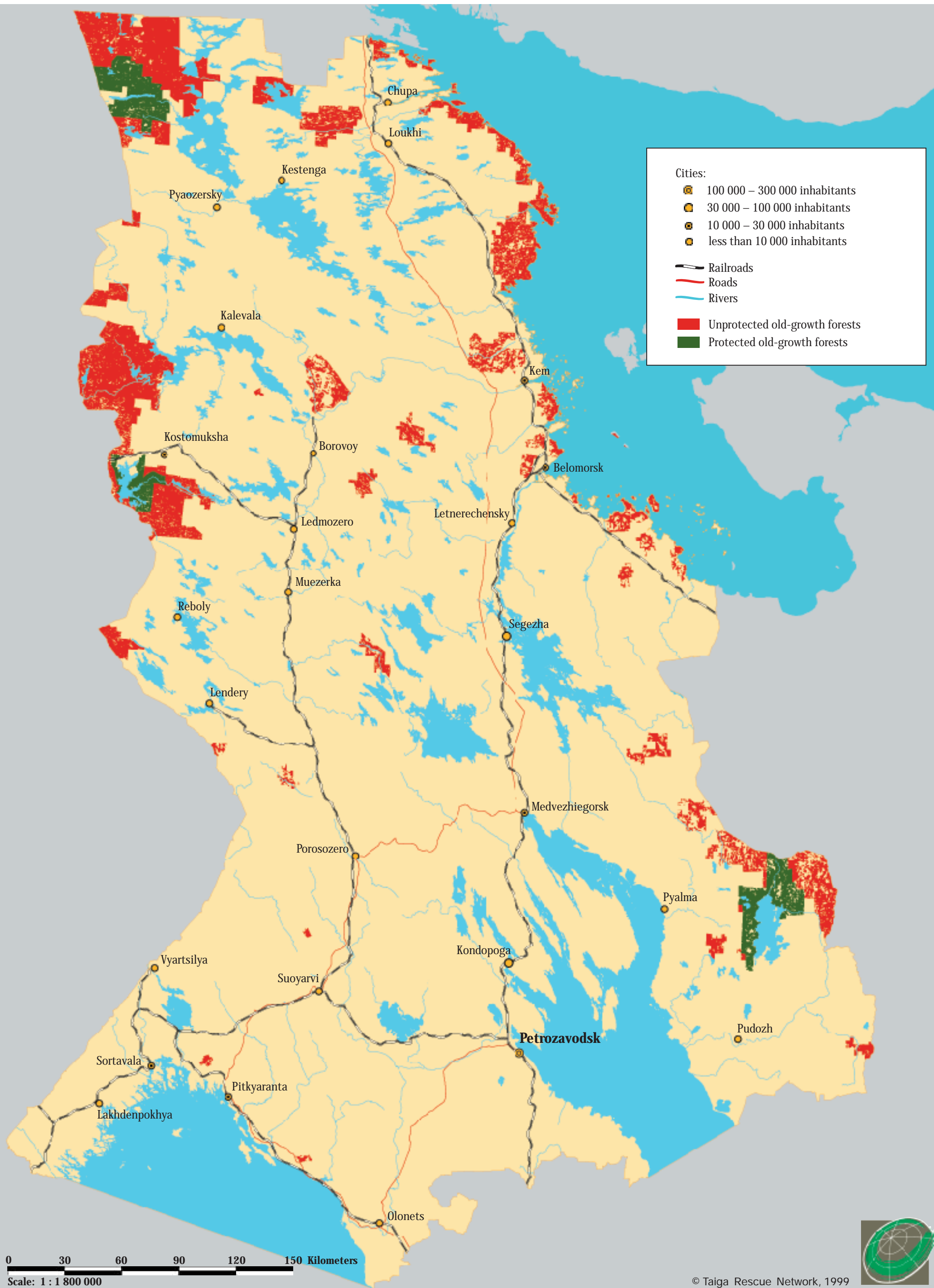


Old-growth Forests in the Karelia Republic



Cities:

- 100 000 – 300 000 inhabitants
- 30 000 – 100 000 inhabitants
- 10 000 – 30 000 inhabitants
- less than 10 000 inhabitants

Infrastructure:

- Railroads
- Roads
- Rivers

Forests:

- Unprotected old-growth forests
- Protected old-growth forests

0 30 60 90 120 150 Kilometers
Scale: 1 : 1 800 000

