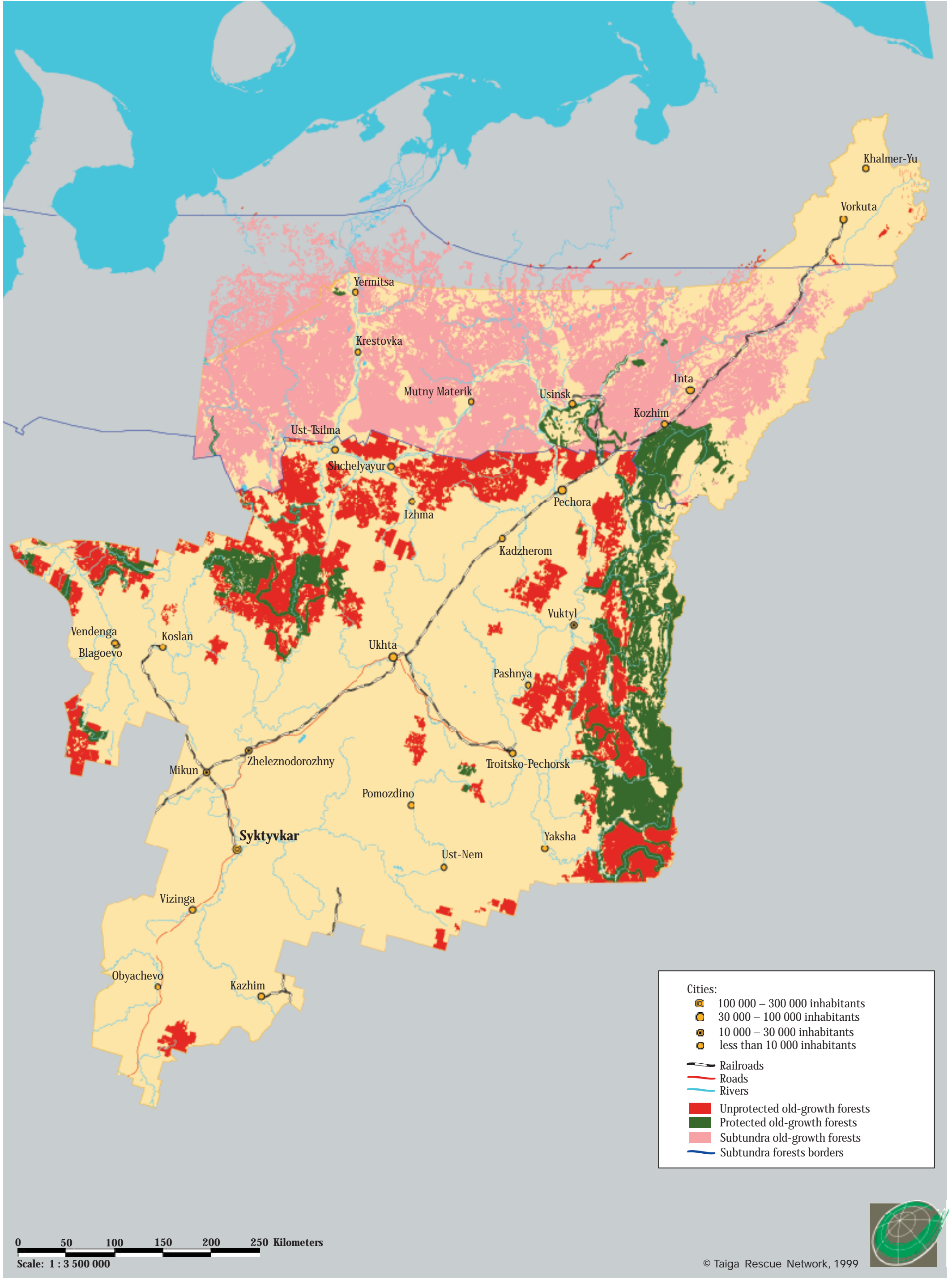


Old-growth Forests in the Komi Republic



Cities:

- 100 000 – 300 000 inhabitants
- 30 000 – 100 000 inhabitants
- 10 000 – 30 000 inhabitants
- less than 10 000 inhabitants

Railroads

Roads

Rivers

Unprotected old-growth forests

Protected old-growth forests

Subtundra old-growth forests

Subtundra forests borders

0 50 100 150 200 250 Kilometers
 Scale: 1 : 3 500 000

